



ALUMNI NEWS

JOHN MARSHALL H.S. Winter 80

Volume V

Number 2

SCHOLARSHIP

Winners of the 1980 Alumni Scholarships were *Lisa Hazners* and *Alex Nadai*.

Lisa is attending Baldwin-Wallace College. Highly recommended, she was on Student Council, helped with the blood donation program, and the Marshall plan. *Lisa* "expresses a great amount of intelligence, poise, and maturity," stated nominator Jim Cappetto (Business).

"*Alex* is one of the most school-oriented young men...mannerly, diligent, a good student, hard worker, and good sport," stated Florence Hall (English). He participated in Student Council, tennis, football, and is attending Cleveland State University while awaiting transfer to the Air Force Academy.

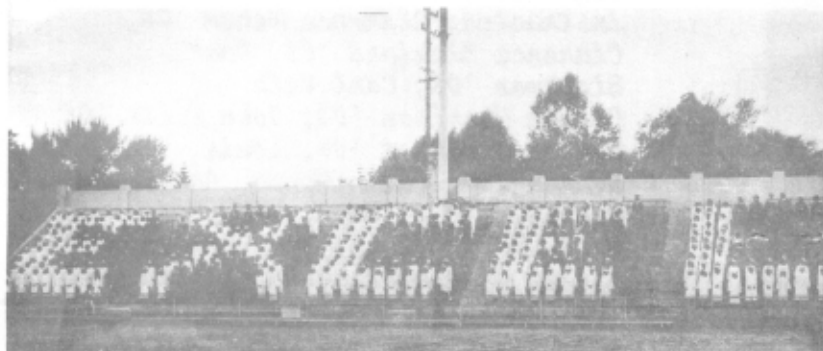


COMMENCEMENT

The one hundred twenty-fifth commencement exercises were held at JMHS stadium on July 16th.

"Our goal is not only to achieve, but to excel," was the class motto. Class colors were red and white, and the class consisted of 218 boys and 267 girls, totaling 485.

Valedictorian honors went to *Linda Zanow*.



YOUR HELP IS NEEDED NOW

The Alumni Association is holding its fund raising Alumni Drive during the Winter of 1980. The operating expenses for the Alumni Association are financed from gifts to the Alumni Drive.

In years past, the Donors to the Drive have sponsored the Newsletter, Scholarship program, Alumni Office, and a Varsity Sports Team (tennis). These programs deserve your continued support.

Unlike some organizations who ask for money yearly, assistance is requested from Alumni every three years. All gifts are fully tax deductible. Keep that in mind so you can make your gift before December 31st.

This year the first 400 contributors of \$5 or more will receive a 1981 weekly planning calendar with pictures and memorabilia from JMHS history.

YOUR DONATION

Since its inception in 1973, the Alumni Drive has raised \$15,915.22. Of this total, 64 per cent has been channeled back to the Alumni in the form of a Newsletter. This figure includes postage and printing.

Operation of the Alumni Office at JMHS has used 32 per cent. This includes records, supplies and equipment. Alumni staff are all volunteers. Scholarships have used four per cent.

Every newsletter is mailed to at least 12,000 graduates and faculty.

YOUR gift is very important to our continued successful operation. You can afford to give something to the Alumni Drive.

REUNIONS

Saturday January 24, 1981 is the date for the thirty-second reunion of the *January '49* class. The gathering is to be held at Sidoti's in Berea.

The *January* and *June* classes of 1971 will hold a combined 10th anniversary reunion at Michaud's in Strongsville on August 1, 1981.

The Strongsville Holiday Inn will host the fifth anniversary reunion for the *June '76* class on August 8, 1981

School phone: (216) 251-5740

Title and names: (ladies, include maiden.) *Classes:*

If your address is not correct on the reverse mailing label, please show correct address.

I want to contribute \$ _____ to the Alumni Drive.
Check ☐ M.O. ☐ Cash ☐ - receipt will be sent for cash donations. Reminder: \$5 or more brings a 1981 weekly planning calendar with JMH pictures.

You can save the Alumni Association 25¢ in postage fees by placing a stamp over the business reply permit.

1908

From our list of early missing graduates, we had many Alumni call us with names. Special thanks to Carl Alcott, June '23, who first told us about Bertha (Scrimshaw) Cawse, June '08.

Mrs. Cawse remembered Rockport H.S. Mr. H.S. Pincombe was principal and teacher from 1904 to 1910. He taught all the classes on the second floor of the old building (below). Grade school was on the first floor.

Reunion groups gathered at Bertha's house. Until recently she taught music-voice. Several of her former pupils have won scholarships at conservatories.

Left: Bertha Schrimshaw at 1908 graduation; right: Mrs. Bertha Cawse, current.

Photo at left taken May 29, 1907 outside Rockport Central H.S. (Leopold's on West 152 and Lorain).

right to left: Mr. Pincombe, instructor; Clarence Weber '08, Clarence Bickford '08, Omar Blackman '08, Carl Volk '08, Calvin Harrison '08, John Reitz '08, Margaret Basset '09, Louis Herrington, Helen Hoppe, Agnes Nehoff, Gladys Gage, Ruth Gilchrist Gertrude Weber '08, Emma Pilgrim, Agatha Gilchrist, Pearl Fisher '09, Julia Sweeny '09, Pearl Campbell '09, Conneila Holyworth.



REUNIONS

YOUR HELP IS NEEDED NOW

The Alumni Association is holding its fund raising Alumni Drive during the Winter of 1980. The operating expenses for the Alumni Association are financed from gifts to the Alumni Drive.

In years past, the Donors to the Drive have sponsored the Newsletter, Scholarship program, Alumni Office, and a Varsity Sports Team (tennis). These programs deserve your continued support.

Unlike some organizations who ask for money yearly, assistance is requested from Alumni every three years. All gifts are fully tax deductible. Keep that in mind so you can make your gift before December 31st.

This year the first 400 contributors of \$5 or more will receive a 1981 weekly planning calendar with pictures and memorabilia from JMHS history.

Saturday January 24, 1981 is the date for the thirty-second reunion of the *January '49* class. The gathering is to be held at Sidoti's in Barea.

The *January* and *June* classes of 1971 will hold a combined 10th anniversary reunion at Michaud's in Strongsville on August 1, 1981.

The Strongsville Holiday Inn will host the fifth anniversary reunion for the *June '76* class on August 8, 1981

School phone: (216) 251-5740

YOUR DONATION

Since its inception in 1973, the Alumni Drive has raised \$15,915.22. Of this total, 64 per cent has been channeled back to the Alumni in the form of a Newsletter. This figure includes postage and printing.

Operation of the Alumni Office at JMHS has used 32 per cent. This includes records, supplies and equipment. Alumni staff are all volunteers. Scholarships have used four per cent.

Every newsletter is mailed to at least 12,000 graduates and faculty.

YOUR gift is very important to our continued successful operation. You can afford to give something to the Alumni Drive.

Title and names: (ladies, include maiden.) Classes:

If your address is not correct on the reverse mailing label, please show correct address.

I want to contribute \$ _____ to the Alumni Drive.
Check ☐ M.O. ☐ Cash ☐ - receipt will be sent for cash donations. Reminder: \$5 or more brings a 1981 weekly planning calendar with JMH pictures.

You can save the Alumni Association 25¢ in postage fees by placing a stamp over the business reply permit.